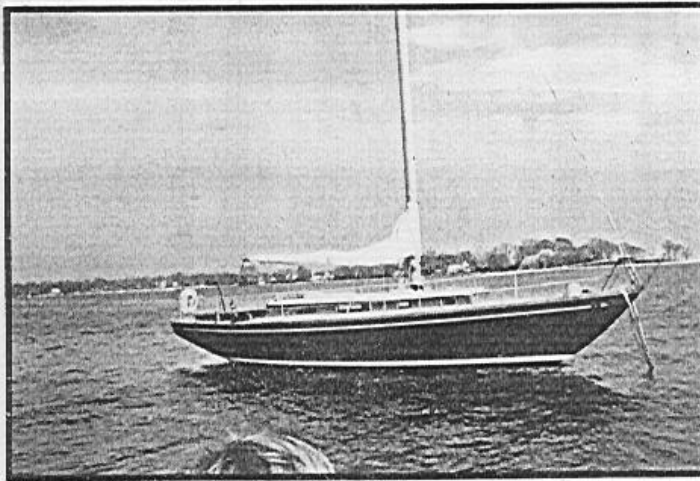


OHLSON 38



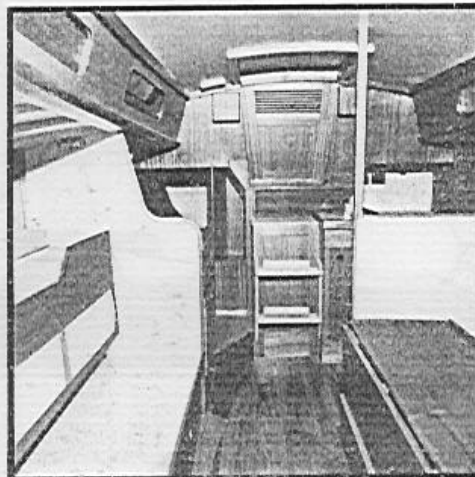
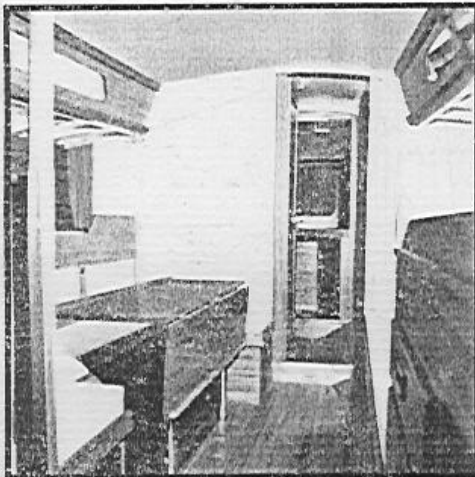
"Pursuit" off Larmont

The Ohlson 38 is being built in both the U.K. and Sweden. Some have been built with an all wood cabin top, with teak laid decks and mahogany cabin sides, the interior also being finished in mahogany as illustrated below. This also clearly shows the superb quality and attention to detail given to the boat by the builders.

The main cabin interior layout offers two pilot berths and settee berths, although a number with dinette layouts have been built.

By following the same lines as the wooden coachroof the G.R.P. top ensures the same attractive look and offers the advantages of greatly reduced maintenance.

It should be noted that the superstructure is lined throughout with an inner lining which has a foam core for insulation and prevention of condensation. The boat has been built with wheel or tiller steering to suit the owner's requirements. It should also be noted that there is a choice of transom types available.



Interior of a Swedish built Ohlson with a wooden coachroof